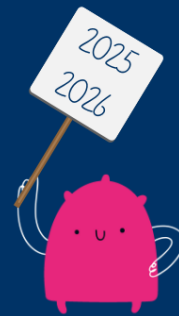


Key Dates - Spring Term



Day	Date	Time	Event
Monday	5th January	All Day	Return to School
Tuesday	13th January	All Day	Y1/2LM museum trip
Wednesday	14th January	All Day	Y1 museum trip
Thursday	15th January	All Day	Y2 museum trip
Wednesday	21st January	8:00 to 8:30am	Foundation Stage reading parent event.
Monday	26th January	3:30—6pm	FS2– Y6 & The Brook Parents' Evening
Wednesday	28th January	3:30—6pm	The Brook Parents' Evening
Thursday	29th January	3:30—6pm	FS2– Y6 Parents' Evening
Tuesday	10th February	2:15pm	Foundation Stage dinosaur parent event.
	16th February— 20th February		Spring Half-Term Holiday
	23rd February— 27th February	All Day	SEND Parents' Meeting Week
	23rd February— 6th March	All Day	Y5 Bikeability in School Details to follow.
Thursday	5th March	All Day	World Book Day
Wednesday	18th March	All Day	Year 3 to Year 6 Sports Day at EIS Details to follow. (Sports Day for Nursery/Foundation Stage/Years 1 and Year 2 in Summer Term)
Thursday	26th March	All Day	Egg Diorama Day—(make a mini scene featuring eggs and bring it in to school to enter the competition.) Last Day of Autumn Term— No After School Club
Friday	27th March	All Day	Inset Day—No Nursery/School for Pupils
	30th March — 10th April 2026		Easter Holidays
Monday	13th April		First Day back in Nursery/School for the Summer Term

