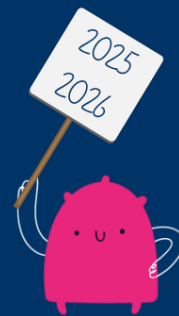


# Key Dates - Autumn Half-Term One



Day	Date	Time	Event
Monday	1st September	All Day	Inset Day
Tuesday	2nd September	All Day 9am-11am or 1pm –3pm 9am-11am or 1pm –3pm	Year 1—Year 6 first day back FS2 transition day 9am to 11am and 1pm to 3pm Stepping Stones and Bridge Induction Day
Wednesday	3rd September	9am—1:15pm 9am-11am or 1pm –3pm	FS2 transition day 9am to 1:15pm Stepping Stones and Bridge Induction Day
Thursday	4th September	All Day	FS2 staying full days from today. Agreed attendance patterns start for Nursery children.
Wednesday	17th September	2pm—3pm 3:30pm—4:15pm	Y1 Parent Phonics Meeting Welcome to Y3 Parent Meeting
Thursday	18th September	5:15pm—6pm	Y1 Parent Phonics Meeting
Wednesday	24th September	2pm-3pm	FS2 Phonics Meeting
Thursday	25th September	5:15pm—6pm	FS2 Phonics Meeting
Friday	26th September	During school day.	Y 1 & Y2 Circus Skills Workshop (pupils only)
Monday— Friday	13th October—17th October	During school day.	SEND Parents Meeting Week
Wednesday	15th October	All Day	Individual Pupil School Photos
Friday	17th October	PM	LKS2 trip to Weston Park Museum—Y3K
Monday	20th October	3:30pm—6pm	FS2—Y6 & The Brook Parents Evening
Tuesday	21st October	PM	LKS2 trip to Weston Park Museum—Y3MT
Wednesday	22nd October	PM	LKS2 trip to Weston Park Museum—Y4M
Thursday	23rd October	3:30pm—6pm	FS2—Y6 & The Brook Parents Evening
Friday	24th October	All Day	Inset Day—No Nursery/School for Pupils
	<b>27th October— 31st October</b>		<b>October 1/2 term holiday</b>

Y3/4GB & Y4T are  
going to Weston Park  
Museum in 1/2 term 2

